

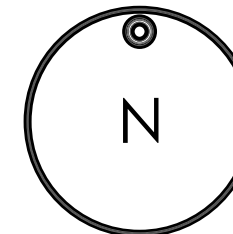
MEWBURN TOWNS

FRONT ELEVATION

MONTROSE

UNITS #
2,3,4,5,6,7

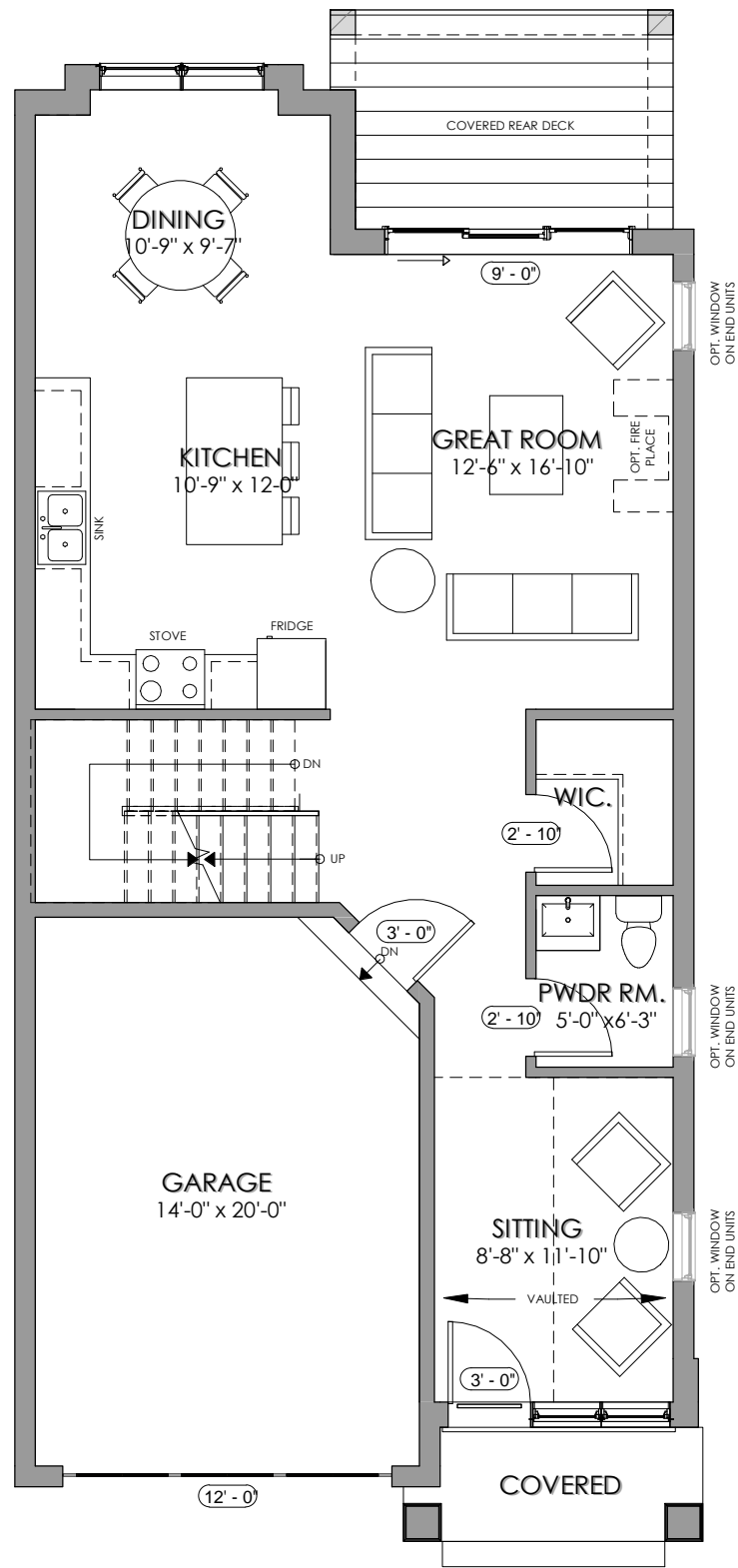




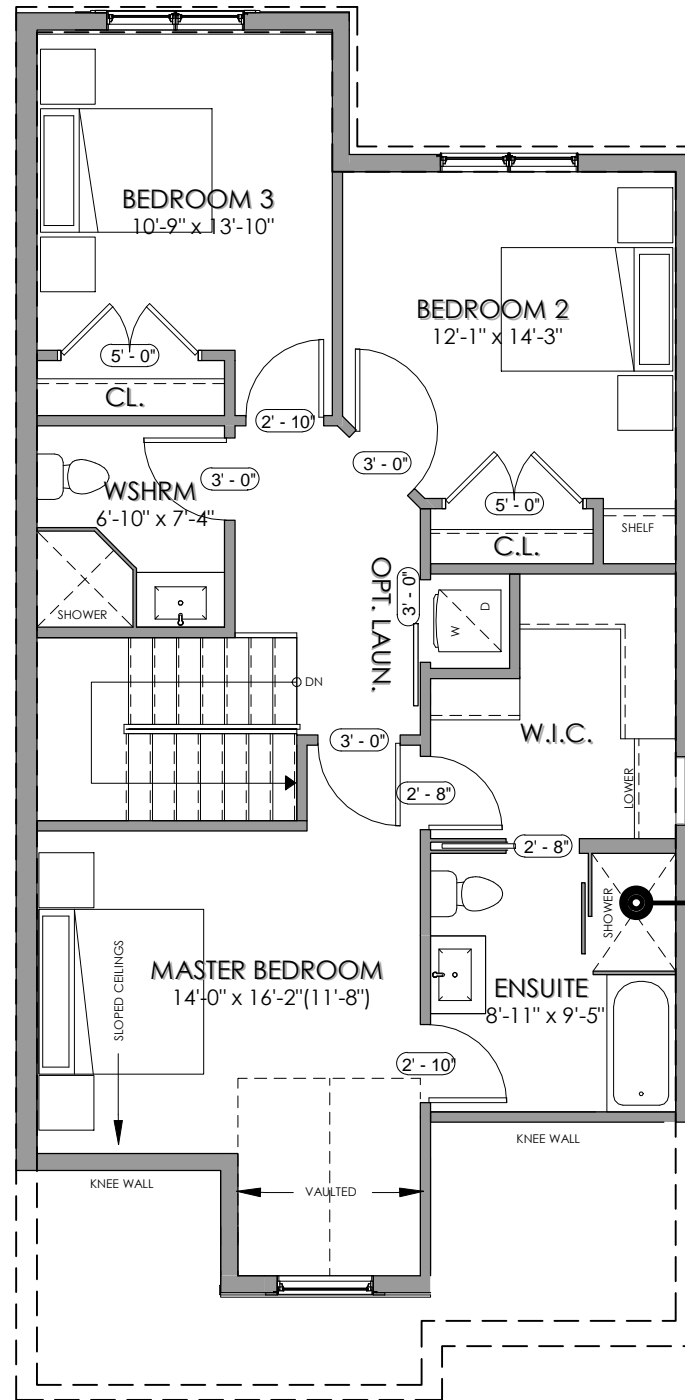
MEWBURN TOWNS NIAGARA FALLS, ONTARIO

TYPE MONTROSE KEY PLAN

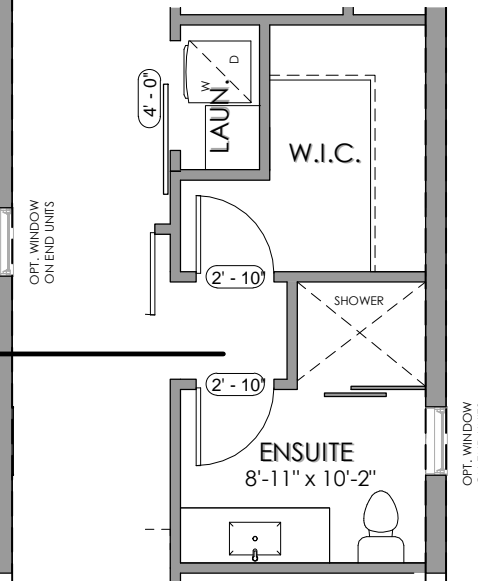




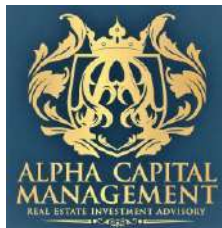
MAIN FLOOR 853.15 SQ.FT



SECOND FLOOR 901.91 SQ.FT



OPTIONAL ENSUITE LAYOUT

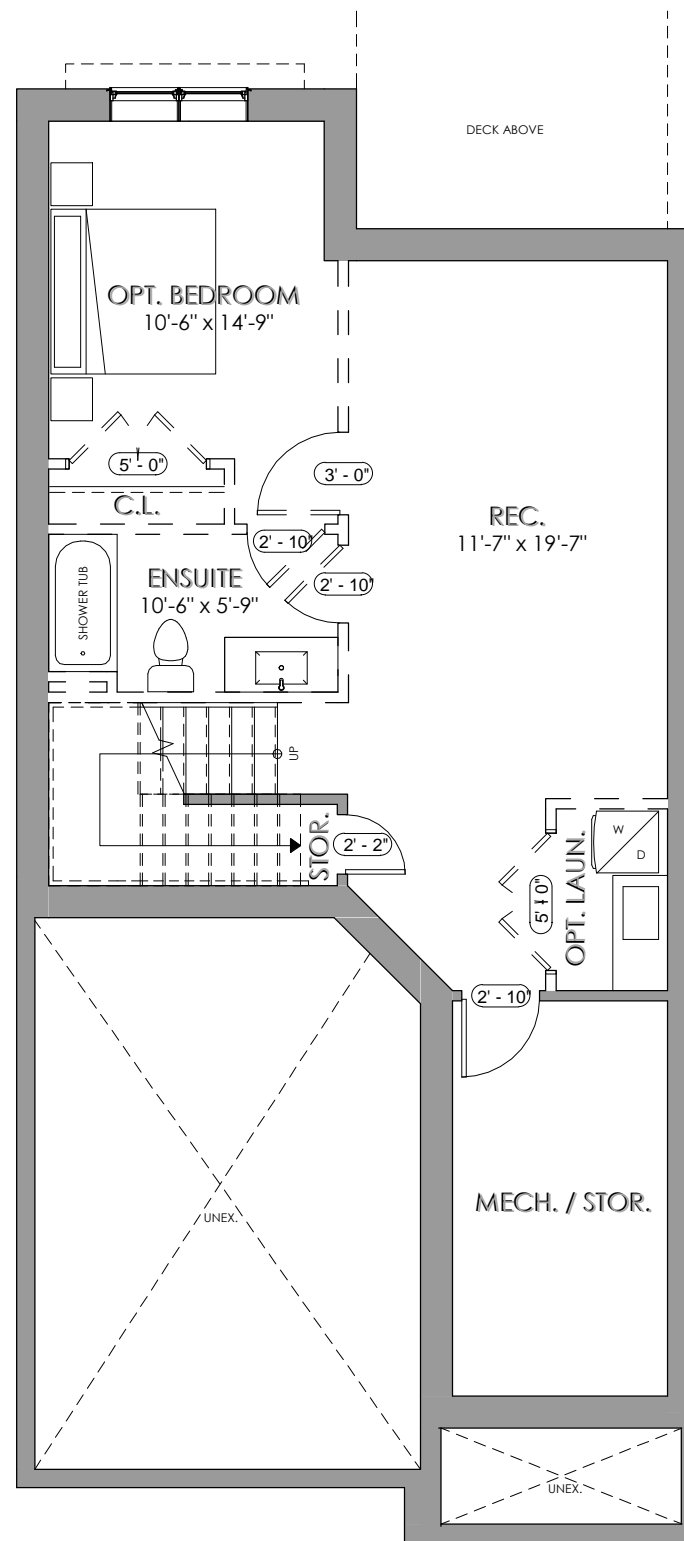


MEWBURN TOWNS

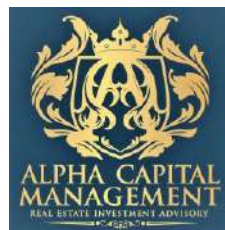
FLOOR PLANS

MONTROSE
UNIT #
2,3,4,5,6,7





LOWER FLOOR 647.17 SQ.FT (OPTIONAL)



MEWBURN TOWNS

FLOOR PLANS

MONTROSE

UNIT #
2,3,4,5,6,7

